

# DATA SHEET SERIES NW WELD PAD STYLE SIGHT GLASSES

## WELD PAD STYLE CIRCULAR SIGHT GLASS SERIES NW |

Series NW sight glasses are offered with nominal viewing diameters of 3", 4", 5", 6", 7", and 9". Custom sizes and configurations are available upon request. Series NW sight glasses are manufactured from ASME Section VIII acceptable metals.

Each sight glass is thoroughly inspected and will provide long and useful service under the most demanding processing conditions.

ASME code calculations and any resulting additional material needed to reinforce sight glass opening to meet ASME code is the responsibility of the buyer.

### DESIGN CONDITIONS:

**Pressure:** Up to 150PSIG/FV depending on size.  
Higher pressure ratings available. Consult factory for details.

**Temperature:** Tempered Soda Lime Glass , 300°F  
Tempered Borosilicate Glass , 500°F  
Fused Quartz Glass , >500°F  
Lexan/Acrylic (Non-Glass), 200°F

### STANDARD MATERIALS OF CONSTRUCTION:

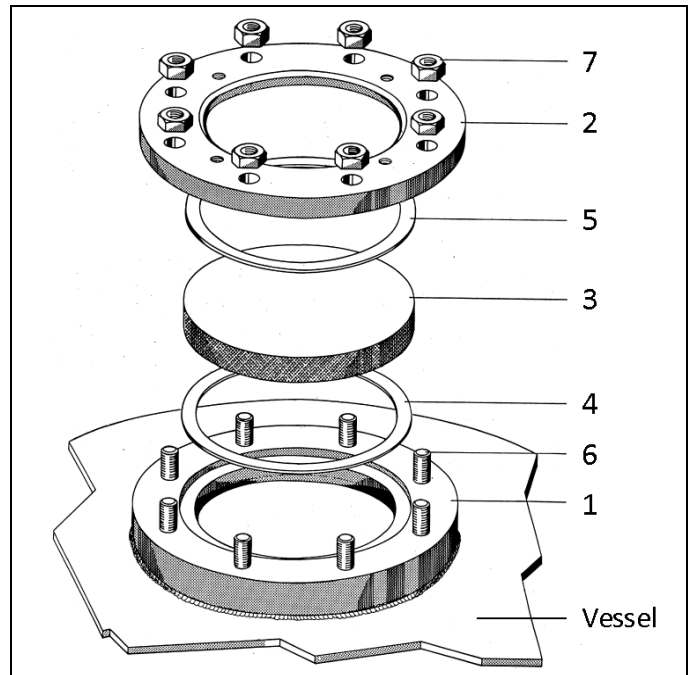
| Item | Description              | Material  |
|------|--------------------------|---|
| 1,2  | Weld Pad & Lens Retainer | SA516 Grade 70 Carbon Steel<br>SA182; SA240 T304/304L SST<br>SA182; SA240 T316/316L SST<br>Hastelloy; Inconel, or Other           |
| 3    | Lens                     | Tempered Soda Lime Glass<br>Tempered Borosilicate Glass<br>Fused Quartz Glass<br>Lexan/Acrylic (Non-Glass )                       |
| 4    | Seal Gasket              | EPDM Elastomer [300°F Max]<br>Expanded PTFE [500°F Max]<br>Fluoroelastomer [400°F Max]<br>Graphite [>500°F]<br>Other upon request |
| 5    | Cushion                  | Non-Asbestos Fiber, or Other  |
| 6    | Stud                     | A193 B7, A193 B8 or Other   |
| 7    | Hex Nut                  | A194 2H, A194 Gr8 or Other  |

### STANDARD DOCUMENTATION:

- Certified Material Test Report [CMTR] for Weld Pad
- Certificate of Compliance
- CMTRs for Lens Retainers & Fasteners upon Request.



PAPAILIAS, Inc. Series NW Weld Pad Style Sight Glass



Exploded View of PAPAILIAS Series NW Weld Pad Style Sight Glass

### AVAILABLE OPTIONS:

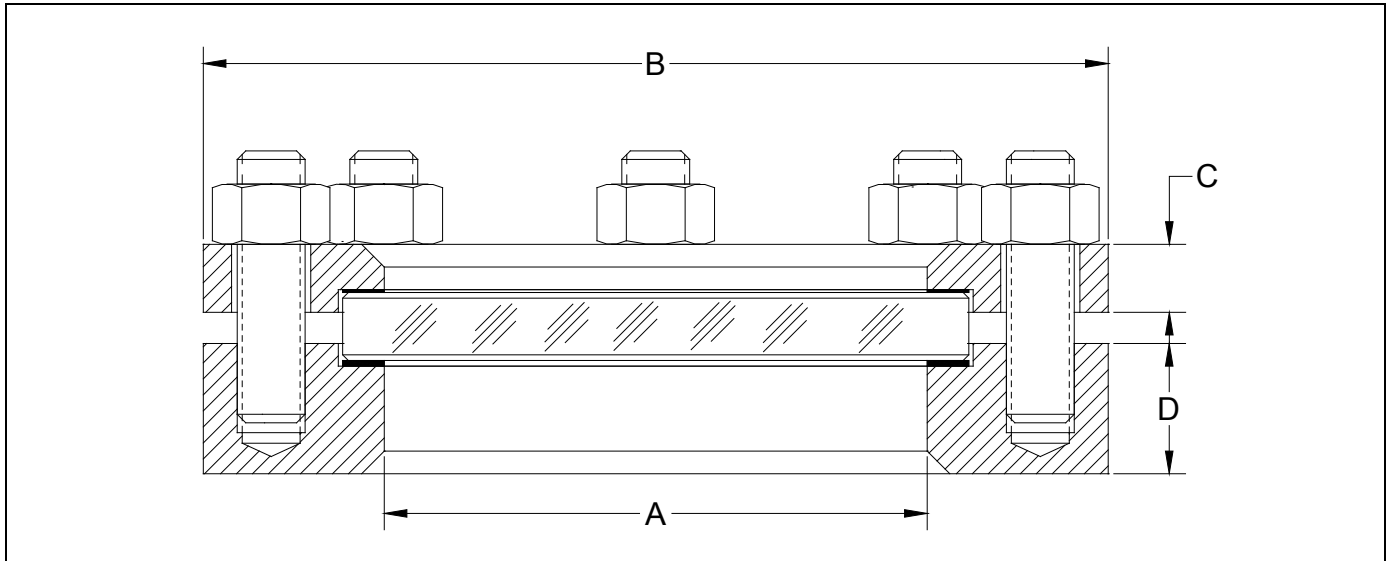
- Type 1 Window Wiper, Type 2 Window Wipers
- Type 2 Spray Washer, Type 3 Spray Ring
- Series PL, MSL, SLEX, REX & FIBERLUX Light Fixtures.
- Radius on weld pad to match tank geometry.

### J.G PAPAILIAS CO., INC

245 Pegasus Ave., Northvale, NJ 07647  
Tel: 201-767-4027 www.papailias.com



# DATA SHEET SERIES NW WELD PAD STYLE SIGHT GLASSES



| Size  | Max. Pressure | No. Bolts/Size | A        | B       | C      | D       | Est. Weight |
|-------|---------------|----------------|----------|---------|--------|---------|-------------|
| NW50  | 150PSIG/FV    | [4x] 5/8"      | 3-1/4"   | 7"      | 3/4"   | 1-3/16" | 18 Lbs      |
| NW80  | 150PSIG/FV    | [4x] 5/8"      | 4"       | 7-1/2"  | 3/4"   | 1-3/16" | 19 Lbs      |
| NW100 | 150PSIG/FV    | [4x] 5/8"      | 5"       | 9"      | 3/4"   | 1-3/16" | 26 Lbs      |
| NW125 | 150PSIG/FV    | [8x] 3/4"      | 6"       | 10"     | 3/4"   | 1-7/16" | 33 Lbs      |
| NW150 | 150PSIG/FV    | [8x] 3/4"      | 6-7/8"   | 11"     | 3/4"   | 1-7/16" | 37 Lbs      |
| NW200 | 125PSIG/FV    | [8x] 3/4"      | 8-13/16" | 13-1/2" | 13/16" | 1-7/16" | 55 Lbs      |

## ORDERING INFORMATION:

|  |  |  |  |  |  |
|--|--|--|--|--|--|
|  |  |  |  |  |  |
|--|--|--|--|--|--|

**Illuminator Option:**

PL80 [ for NW50]  
 PL100 [ for NW80]  
 PL125 [ for NW100]  
 PL150 [ for NW125]  
 PL175 [ for NW150]  
 PL225 [ for NW50]  
 MSL-100  
 MSL-HI-LED  
 SLEX-100  
 REX-100  
 SLEX-HI-LED

**Size:**

NW50  
 NW80  
 NW100  
 NW125  
 NW150  
 NW200

**Weld Pad:**

CS - SA516 Gr70  
 304 - 304/304L SST\*  
 316 - 316/316L SST\*  
 C22 - Alloy C22  
 C276 - Alloy C276  
 A20 - Alloy 20  
 Other - Specify

\*SA182 or SA240

**Lens Retainer:**

CS - SA516 Gr70  
 304 - 304/304L SST\*  
 316 - 316/316L SST\*  
 C22 - Alloy C22  
 C276 - Alloy C276  
 A20 - Alloy 20  
 Other - Specify

\*SA182 or SA240

**Lens:**

TSL - Temp Soda Lime  
 TBS - Temp Borosilicate  
 QTZ - Fused Quartz  
 ACR - Cast Acrylic  
 LEX - Polycarbonate  
 Other - Specify

**Seal Gasket:**

EPDM - EPDM  
 TFE - ePTFE  
 FKM - Viton/FKM  
 SIL - Silicone  
 NEO - Neoprene  
 GPH - Graphite  
 Other - Specify

|  |  |
|--|--|
|  |  |
|--|--|

**Wiper Option:**

TY1WW - Type 1 Wiper  
 TY1WW - Type 2 Wiper\*

\* Sizes ≥ NW100

|  |  |
|--|--|
|  |  |
|--|--|

**Washer Option:**

TY2SW - Type 2 Spray Washer  
 TY3SW - Type 3 Spray Washer/Ring

**Note:** ASME code calculations and any resulting additional material needed to reinforce sight glass opening to meet ASME code is the responsibility of the buyer.

**Sample Part #:** SLEX-HI-LED/NW125/304/304/TBS/TFE/TY3SW  
 6" NW Weld Pad Sight Glass with 304/304L Stainless Steel Weld Pad and Lens Retainer. Tempered Borosilicate Glass Lens, Expanded PTFE Seal Gasket. Fitted with SLEX-HI-LED Light Fixture and Type 3 Spray Ring.